

YEAR 2012

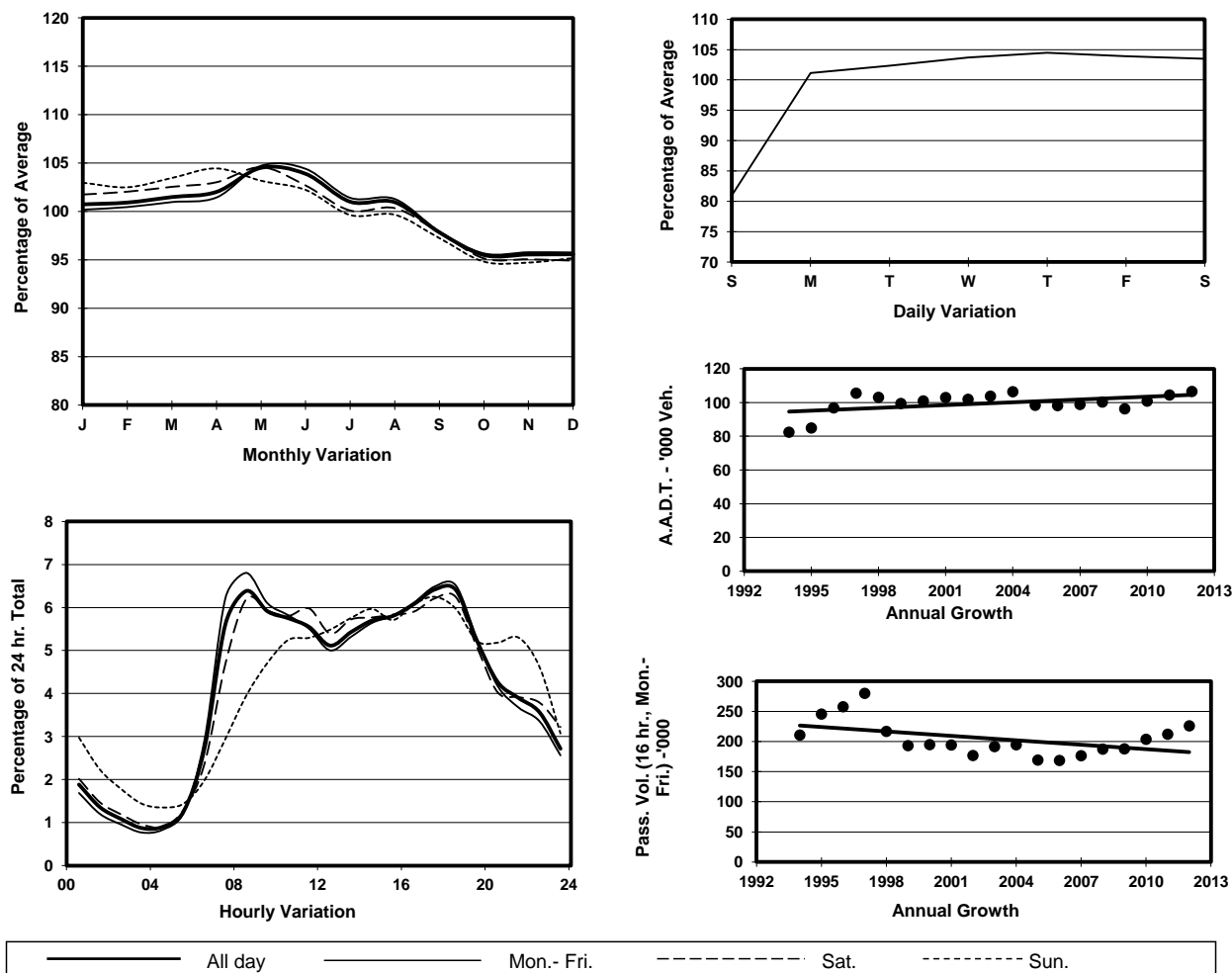
Location

Screenline Y-Y(Boundary between Tuen Mun & Yuen Long)

Stations on Cordon/Screenline

5025 and 6213

## 1. TRAFFIC FLOW VARIATION AND GROWTH



## 2. TRAFFIC CHARACTERISTICS (BY DIRECTION)

Parameter	All - Day	Mon. - Fri.	Sat.	Sun.
<b>EAST BOUND</b>				
A.A.D.T.	54310	56530	57120	44210
R 12 / 24 - %	70.3	71.5	69.6	63
R 16 / 24 - %	87.6	88.5	86.9	83.5
AM Peak Hour	0800-0900	0800-0900	0800-0900	0900-1000
One-way flow at AM peak hour	3460	3830	3590	2120
T - % (AM)	-	25.7	-	-
PM Peak Hour	1800-1900	1700-1800	1800-1900	1700-1800
One-way flow at PM peak hour	3470	3670	3690	2700
T - % (PM)	-	22.2	-	-
Prop.of commercial vehicles - 16 hr.	-	26.2	-	-
<b>WEST BOUND</b>				
A.A.D.T.	52220	54470	53980	43010
R 12 / 24 - %	70.1	71.2	69.9	63.8
R 16 / 24 - %	86.7	87.2	86.2	83.9
AM Peak Hour	0800-0900	0800-0900	0800-0900	0900-1000
One-way flow at AM peak hour	3350	3730	3300	1990
T - % (AM)	-	24.5	-	-
PM Peak Hour	1700-1800	1800-1900	1700-1800	1700-1800
One-way flow at PM peak hour	3390	3570	3570	2750
T - % (PM)	-	16	-	-
Prop.of commercial vehicles - 16 hr.	-	26	-	-

## 3. OTHER INFORMATION AND COMMENT

**4. Vehicle classification and occupancy - Monday to Friday**

Time		Class of vehicle									
		Motor Cycle	Private Car	Taxi	Private LB	PLB	Goods veh.		Non Fr. Bus	Fr. Bus	
							Light	M & H		SD	DD
0700-0800	Pro	2.1	33.2	10.5	0.4	3.1	21.2	22.1	6.0	0.3	1.0
	Ocp	1.1	1.4	2.1	6.9	12.8	1.5	1.1	8.0	17.9	26.5
0800-0900 Peak Hour	Pro	1.3	40.3	11.4	0.6	2.8	18.6	20.9	3.2	0.3	0.6
	Ocp	1.0	1.4	2.0	5.0	13.9	1.5	1.1	17.0	17.5	32.7
0900-1000	Pro	1.2	33.6	8.3	0.8	1.9	22.3	28.1	2.7	0.3	0.8
	Ocp	1.1	1.4	1.7	2.3	12.8	1.5	1.4	11.1	18.6	17.8
1000-1100	Pro	0.4	27.7	7.7	1.1	2.3	25.7	31.6	2.5	0.4	0.7
	Ocp	1.0	1.4	2.0	2.6	9.9	1.4	1.1	21.5	18.4	19.9
1100-1200	Pro	1.0	28.9	9.5	0.8	2.9	22.2	30.2	3.3	0.3	0.8
	Ocp	1.0	1.5	2.0	1.9	10.3	1.4	1.2	15.3	16.5	21.6
1200-1300	Pro	1.3	26.7	11.4	0.9	2.6	24.2	29.1	2.8	0.4	0.7
	Ocp	1.0	1.5	1.9	3.6	9.1	1.4	1.2	9.7	18.5	18.1
1300-1400	Pro	1.1	29.4	10.6	0.7	2.4	25.0	27.4	2.3	0.3	0.7
	Ocp	1.1	1.6	1.7	2.2	9.3	1.5	1.1	15.5	17.5	20.2
1400-1500	Pro	1.3	30.8	8.9	0.8	1.9	26.1	26.9	2.2	0.3	0.7
	Ocp	1.0	1.4	1.9	4.0	10.2	1.4	1.2	13.7	20.0	17.6
1500-1600	Pro	0.5	32.2	10.9	1.3	2.2	23.4	24.9	3.6	0.3	0.7
	Ocp	1.2	1.6	2.0	2.4	10.9	1.4	1.1	11.6	20.8	23.1
1600-1700	Pro	1.6	30.9	10.7	0.5	1.6	24.7	25.2	3.5	0.4	0.9
	Ocp	1.0	1.5	1.5	3.4	11.2	1.5	1.1	12.5	23.2	19.0
1700-1800	Pro	2.2	35.3	11.0	1.3	2.0	24.8	18.7	3.5	0.4	0.8
	Ocp	1.0	1.5	1.9	2.5	14.6	1.6	1.2	13.3	22.6	23.9
1800-1900	Pro	1.7	47.8	9.4	0.8	3.2	19.7	12.7	3.8	0.3	0.7
	Ocp	1.1	1.5	1.8	1.9	16.2	1.3	1.1	11.1	22.3	35.4
1900-2000	Pro	1.5	55.9	10.8	0.3	2.6	14.2	9.9	3.6	0.4	0.8
	Ocp	1.0	1.4	2.1	2.2	13.5	1.3	1.1	6.5	16.0	27.9
2000-2100	Pro	2.1	55.7	13.1	0.4	3.1	10.6	7.2	5.9	0.5	1.3
	Ocp	1.1	1.4	1.8	1.4	13.3	1.4	1.1	11.2	12.6	13.0
2100-2200	Pro	2.3	54.1	15.7	0.6	3.4	10.9	6.5	5.1	0.4	1.1
	Ocp	1.0	1.4	1.7	1.5	11.0	1.4	1.1	8.2	10.0	11.9
2200-2300	Pro	1.6	55.5	18.0	0.2	3.8	10.2	6.4	2.4	0.5	1.3
	Ocp	1.1	1.5	1.8	2.5	12.1	1.5	1.1	19.7	8.5	9.1
16 hours	Pro	1.4	37.5	10.8	0.8	2.6	20.9	21.3	3.5	0.3	0.8
	Ocp	1.1	1.5	1.9	2.8	12.2	1.5	1.2	12.2	17.8	21.1

**Legend**

- Pro.** Proportion of vehicles in % (Sum may not add up to 100% due to figure rounding)
- Ocp.** Average occupancy of vehicles
- M & H** Medium and Heavy